

The background is a deep blue ocean. In the top left, a seahorse swims near white starfish. In the top right, three clownfish swim near a white starfish. In the center, a large orange banner with a scalloped edge contains the title. Below the banner, a shark swims on the right, a turtle swims in the middle, and a jellyfish floats on the right. The bottom of the image is filled with colorful coral, seashells, and bubbles.

UNDER THE SEA

Homecoming!

DRESS ATTIRE

It is VERY important to review the dress code guidelines prior to selecting your attire for the Catholic school event. Attire that is inappropriate for the occasion or deviates from modesty in the judgment of a school administrator may result in being denied admission and/or Saturday detentions will be issued.

Attending a Catholic school dance is optional. Attire must represent the modesty acceptable for a Catholic school dance. Guidelines will be strictly enforced.

Homecoming is a Semi-Formal event. Attire that is inappropriate for the occasion or deviates from modesty in the judgment of a school administrator may result in being denied admission and/or a Saturday detention will be issued.

DRESS ATTIRE

(CONT.)
Education's most important task for administrators is the determination of modesty for students at school dances. Traditional interpretations are often at odds with fashion and cultural trends.


Modesty is admittedly a subjective interpretation, but one which we have a duty to uphold. Students should therefore err on the side of modesty and formality and not put school administrators in the difficult position of upholding school standards. We thank you in advance for your cooperation and respect of the school dance rules.

Students are encouraged to speak with Mrs. Jamie Flannery, Assistant Principal for Campus Life, regarding any questions or for pre-approval of their dance attire.

DRESS ATTIRE ~ LADIES

Homecoming is a semi-formal event. Attire should reflect a formal family occasion (like a formal wedding).

- *A tasteful, elegant dress, pantsuit, or jumpsuit for a Catholic school dance is required.*
- *Dresses may not be shorter than 4 inches above the knee. This includes any slit.*
- *Dresses that are too revealing, are skin tight or form-fitting, expose the midriff or cleavage, or are too short in length are not appropriate.*
- *Attire may not be backless (below the elbow), may not be see-through or have cut-outs. Please be modest with sheer material. A sheer layer that reveals more than 4 inches above the knee or a low cut neckline is not acceptable for a Catholic high school dance.*
- *Sheer material may not be covering stomach, sides, or a low back*
- *Dresses and jumpsuits may not be strapless. Dresses must have TWO straps. No one-strap/one-shoulder dresses will be allowed*

An underwater-themed illustration with a blue background. In the center, an orange banner with a scalloped edge contains white text. To the right, a purple jellyfish with long, thin tentacles floats. The scene is decorated with various coral reefs in shades of blue, green, and orange, and several translucent bubbles of different sizes scattered throughout.

**THERE ARE BEAUTIFUL
OUTFITS THAT MEET
THE REQUIREMENTS FOR
A
CATHOLIC HIGH SCHOOL
DANCE...**

EXAMPLES



EXAMPLES



EXAMPLES



EXAMPLES



EXAMPLES



EXAMPLES



EXAMPLES



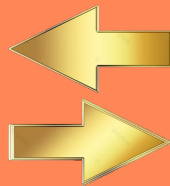
An underwater scene with a blue background. At the top center is a large blue dolphin. To its left is a red and white spotted octopus. To its right is a large orange starfish. In the bottom left are two small orange fish and purple coral. In the bottom right are several pink and white patterned fish, black coral, and orange coral. The text is centered in a white box with a scalloped edge.

**HERE ARE A FEW
EXAMPLES OF ATTIRE
THAT WOULD NOT BE IN
COMPLIANCE WITH A
CATHOLIC HIGH SCHOOL
EVENT...**

BAD EXAMPLES



**TOO SHORT
TOO LOW CUT
TOO REVEALING**



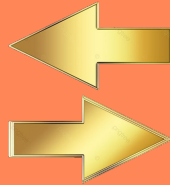
**TOO SHORT
TOO
REVEALING**



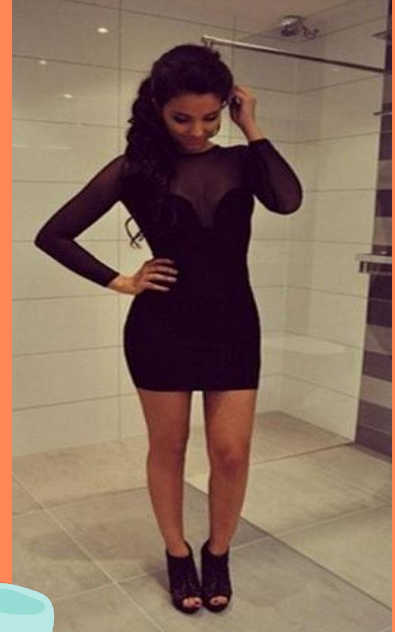
BAD EXAMPLES



DRESSES THAT ARE TOO SHORT AND SKIN TIGHT CONTINUE TO RISE WHEN STUDENTS WALK AND DANCE.



TOO SHORT, TOO TIGHT, TOO REVEALING FOR A SCHOOL DANCE.



BAD EXAMPLES

STRAPLESS!



**REVEALING -
BARE MIDRIFF**



**TOO SHORT REGARDLESS
OF SHEER OVERLAY**



BAD EXAMPLES



**DRESSES AND
PANT SUITS
MAY NOT SHOW
ANY MIDRIFF.
THE FOLLOWING
OUTFITS WOULD
NOT MEET DRESS
CODE**

BAD EXAMPLES



SHEET LAYER MAY NOT COVER A LOW CUT NECKLINE OR REVEAL MORE THAN 4 INCHES ABOVE THE KNEE. IT MAY ALSO NOT COVER THE MIDRIF OR SIDES. THE FOLLOWING OUTFITS WOULD NOT MEET DRESS CODE!

BAD EXAMPLES



**THE NECKLINE
ON THE
FOLLOWING
OUTFITS
WOULD BE
CONSIDERED
TOO
REVEALING:**

BAD EXAMPLES



**THE
FOLLOWING
OUTFITS ARE
TOO TIGHT
AND FORM
FITTING.**

BAD EXAMPLES



**TOO LOW ON SIDES (SHOWS
BRALETTE/UNDERGARMEN
T)**
**TOO LOW IN BACK (SHOWS
BRALETTE/UNDERGARMEN
T)**



TOO SHORT
**TOO LOW ON SIDES (SHOWS
BRALETTE/UNDERGARMEN
T)**
**TOO LOW IN BACK (SHOWS
BRALETTE/UNDERGARMEN
T)**



SNEAKERS ARE ALLOWED WITH OUTFITS!




GENTLEMEN

- *Gentlemen guests are required to wear a long sleeve, button-up, collared shirt with a regular tie or bow tie. They must wear dress pants (no jeans) with a belt or suspenders and a vest, sport coat, suit, or formal sweater. They must wear dress shoes. Shirts should remain tucked in for the duration of the dance.*
- *Sunglasses and bare feet are not allowed for either ladies or gentlemen.*
- *Students/and or their guests who are dressed inappropriately (which is determined at the discretion of the administrator/teacher at the event) will be denied admission without a refund and/or may receive a Saturday detention.*

ACCESSORIES

- *Remember this is a semi-formal event and your choice of what to wear should reflect the occasion.*
- *Wigs are NOT permitted by OLP students or guests and student hair color must reflect their natural shade.*
- *Any outfit choice deemed to be culturally insensitive will also not be accepted at the Homecoming dance.*

An underwater-themed illustration with a blue background. A purple jellyfish with long, thin tentacles is on the right. Various coral reefs in shades of purple, blue, and orange are scattered throughout. Numerous bubbles of different sizes are floating around. The central text is contained within an orange, torn-edge rectangular box.

BE BEAUTIFUL, BE YOU!

**IF YOU HAVE ANY QUESTIONS ABOUT
YOUR DRESS, EMAIL MRS. FLANNERY TO
FOR APPROVAL.**